



The Go Tracking online suite is a powerful Mobile Resource Management platform providing comprehensive management tools focused on reduction of operational and maintenance costs, increased mobile asset utilisation, optimised planning and scheduling of job assignments and overall enhanced mobile resource safety.

The platform is browser based, presenting the operator with a multilingual, user friendly interface. The platform boasts incorporation of the latest technology tools, ensuring high performance, ease of use and an overall rewarding user experience.

Reports can be exported to many formats and scheduled to be generated and emailed automatically to designated users on a user defined periodical basis.

The platform has been successfully deployed in fleets across many industries including utilities, logistics, pharmaceuticals, emergency response, etc and has consistently proven to be an invaluable and dynamic management tool.



## FEATURES

**Automatic Vehicle Location [AVL]**  
Map display of a vehicle's current and historical locations, accompanied by a suite of reports encompassing vehicle and driver activities, vehicle events, and vehicle maintenance related information.

**Driver Performance**  
Suite of reports designed to analyse driving behaviour and identify drivers whose driving style has a material impact on the vehicle's operating and maintenance costs.

**Refrigeration**  
On-line view of any alerts relating to refrigerated goods in transit, complemented by historical views and analysis of refrigeration information.

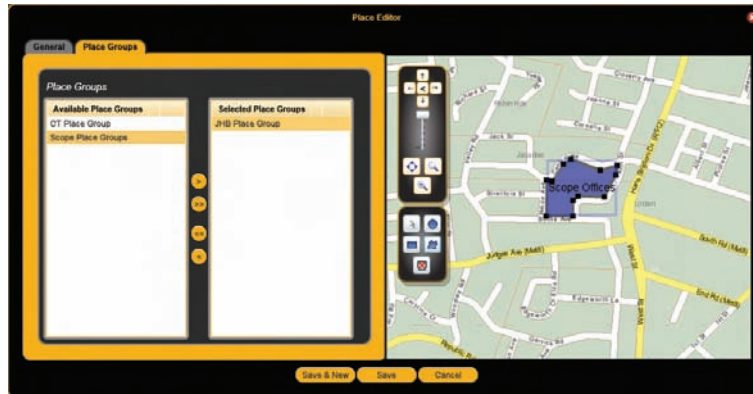
**Utilisation**  
Suite of reports designated to provide mobile asset utilisation against a user defined utilisation profile. The reports facilitate the identification of assets with low utilisation as well as trends analysis, which can be used in optimising the number of resources required.

**Fuel Management**  
Management of a vehicle's fuel consumption, analysed against the vehicle's activities, complemented by trend analysis. The fuel source data can be derived from a variety of sources including electronic fuelling cards, in vehicle network or manual entries.



## Places of Interest (POI)

Monitoring of the mobile resource activities within user defined geographical areas (POI). The POI can be categorized by the operators to any user defined category (i.e. Customer locations, fuelling stations, depots, etc.). The POI related mobile resource activity is analysed and presented to the user in a variety of reports.



## Dispatcher

Allows for the dispatch optimisation of the closest available mobile resource to a required destination.



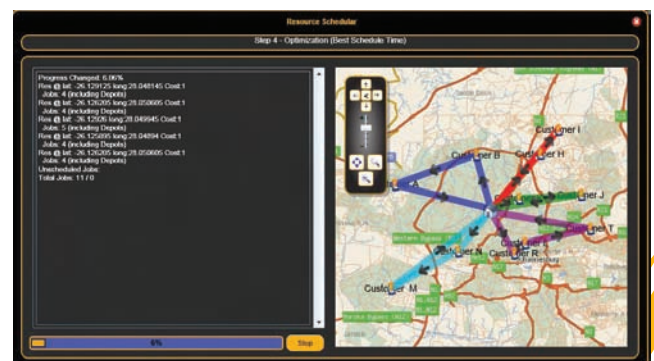
## Planning and scheduling

At the heart of mobile resource management are the planning and scheduling tools. The MRM module provides a powerful planning and optimization platform which incorporates job creation, allocation and scheduling. The optimization engine utilizes Scope's advanced proprietary algorithms, which keep refining the optimization of the mobile asset group based on statistical performance data.

The planned routes/jobs can be synchronized with the mobile handheld or in-cab screens, allowing the driver to view the assigned jobs/routes and provide real time feedback.

A real time Gantt Chart view of actual vs. plan provides the operator with the ability to view execution status, identify and dynamically respond to execution problems and schedule ad-hoc assignments

The module is complemented with a suite of performance reports designed to analyze the mobile resource performance, identify problems relating to the supply chain, trends analysis, etc.



Go Technologies Pty Ltd  
55 Rocco Drive  
Scoresby, Victoria 3179  
Australia

www.go-tech.com.au  
info@go-tech.com.au  
Ph: +61 3 9237 0800  
F: +61 3 9237 0808